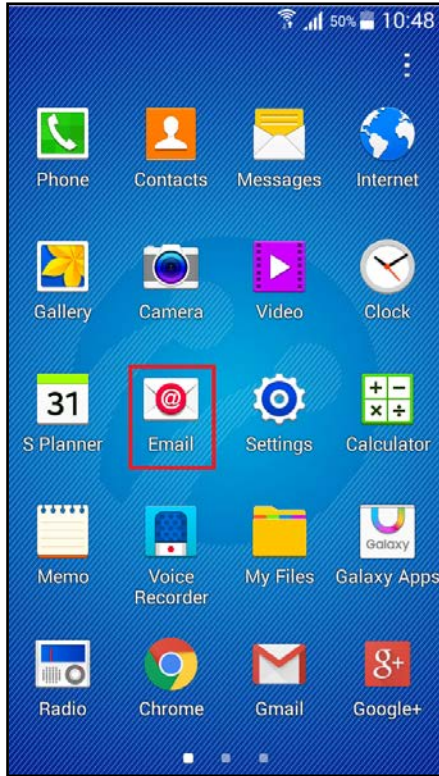
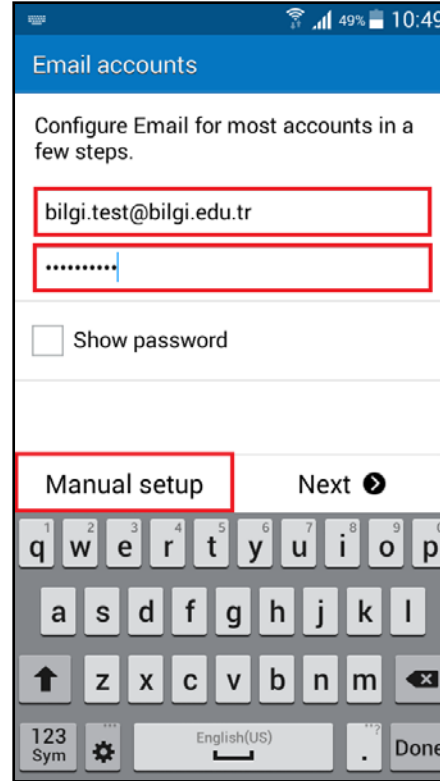


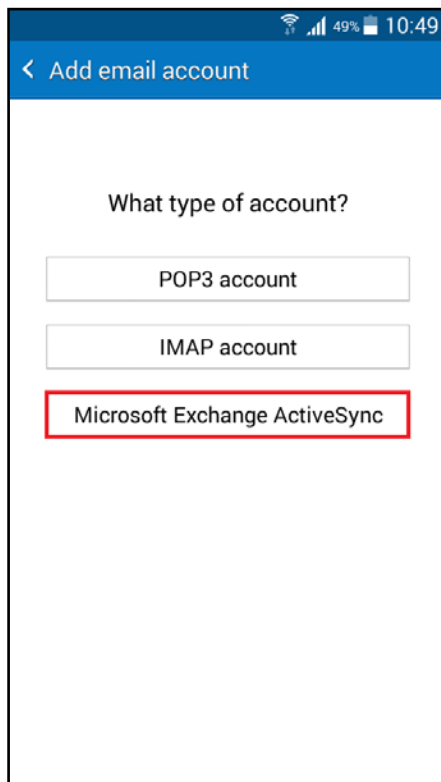
Setup BİLGİ Mail on Android



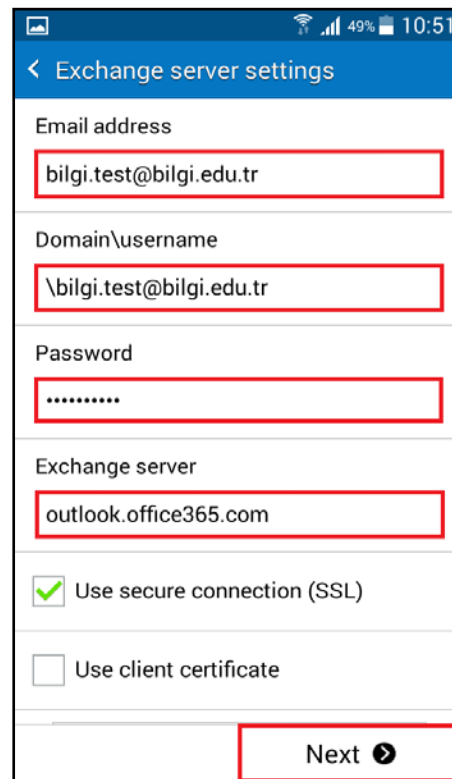
Tab E-Mail.



Enter your full e-mail address and password, and then tap **Manual Setup**.

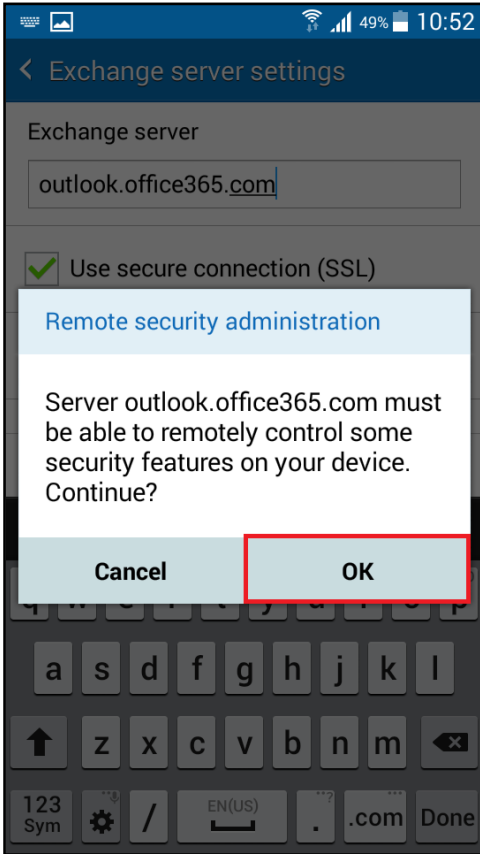


Tab **Microsoft Exchange ActiveSync**.

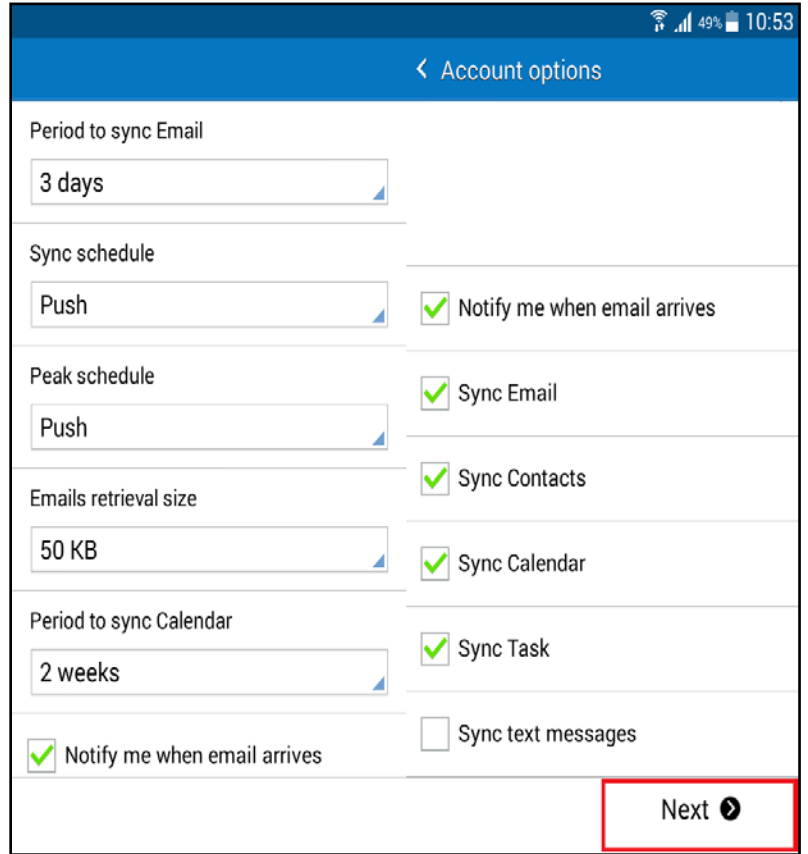


Enter your full e-mail address, username and password, Exchange server address then tap **Next**.

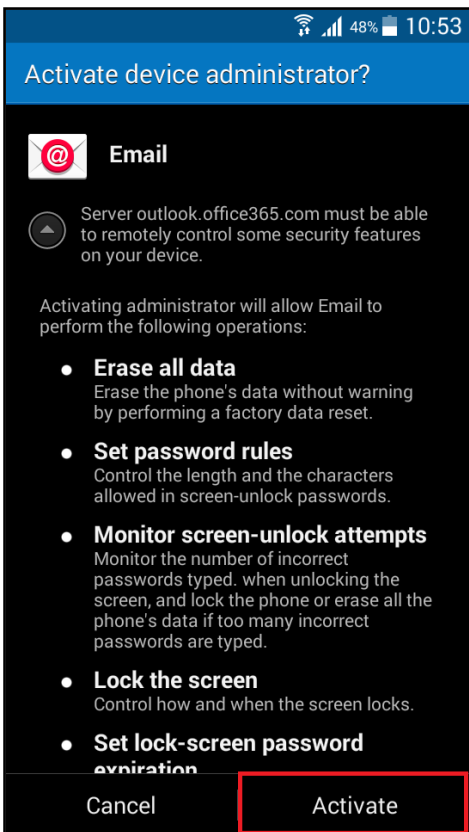
Setup BİLGİ Mail on Android



Tap **OK** for Remote security administration.



You can change the time of **Mail, Contacts and Calendar** synchronize. When you are finished, tap **Next**.



Tap **Activate** to for Device Administrator



Give this account a name and tap **Done**.